

How do I add more information to my Summary Care Record?

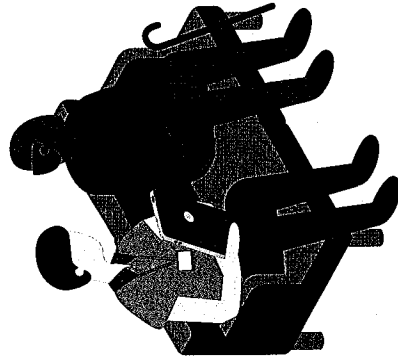
Ask your GP practice to add additional information to your record.

Summary Care Records for children

If you are the parent or guardian of a child under 16 and believe they may benefit from additional information in their SCR, you can discuss this with your GP practice.

Vulnerable patients and carers

Certain vulnerable patient groups such as frail elderly people or those with detailed and complex health problems can particularly benefit from additional information in their SCR.



If you are a carer for another person and believe that they may benefit from additional information in their SCR, then you can discuss this with them and their GP practice.

The NHS logo, consisting of the letters 'NHS' in a bold, white, sans-serif font inside a black rectangular box.

The NHS logo, consisting of the letters 'NHS' in a bold, white, sans-serif font inside a black rectangular box.

Summary Care Record

What you need to know



For more information about
Summary Care Records
you can:

Talk to the staff at your GP practice

Visit www.digital.nhs.uk/scr

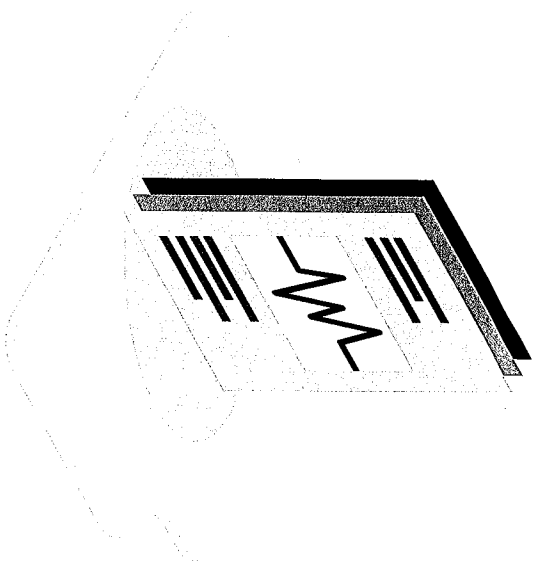
Phone NHS Digital enquiries on
0300 303 5678

Your Summary Care Record (SCR)
is a copy of key information held
in your GP record.

What is my Summary Care Record?

Your Summary Care Record (SCR) is a copy of key information held in your GP record.

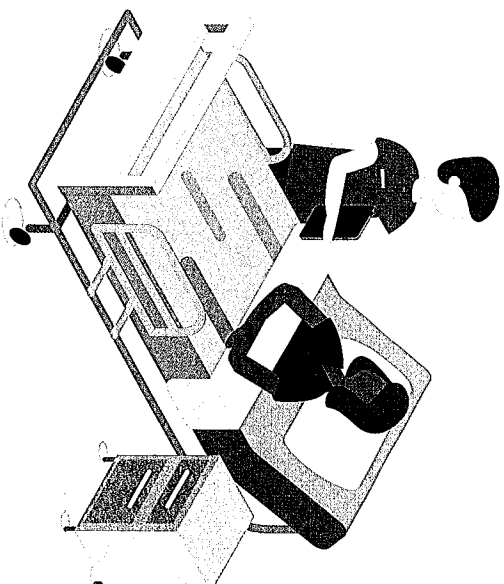
It provides authorised healthcare staff with faster, secure access to essential information about you and is used when you need unplanned care or when your GP practice is closed.



Your SCR contains information on medicines you are taking, any allergies you suffer from and any bad reactions to medicines that you have previously experienced.

Can more information be added to my Summary Care Record?

Yes. Ask your GP practice to add information to your record. You can change your mind at any time by simply informing your GP practice.



Essential details about your healthcare can be very difficult to remember, particularly when you are unwell.

If you choose to add more information to your SCR it means that when you need healthcare, you will be helped to recall this vital information.

What other information can be added to my Summary Care Record?

Your long term health conditions - such as asthma, diabetes, heart problems or rare medical conditions.

Your relevant medical history – clinical procedures that you have had, why you need a particular medicine, the care you are currently receiving and clinical advice to support your future care.

Your health care preferences – you may have your own care preferences which will make caring for you more in line with your needs, such as special dietary requirements.

Your personal preferences – you may have personal preferences, such as religious beliefs or legal decisions that you would like to be known.

Immunisations – details of previous vaccinations, such as tetanus and routine childhood jabs.

Specific sensitive information – such as any fertility treatments, sexually transmitted infections, pregnancy terminations or gender reassignment will not be included, unless you specifically ask for any of these items to be included.

If this information isn't included in your SCR you may have to remember it and repeat it to healthcare staff treating you.